



The Ultimate  
Driving Machine



# THE NEW BMW X4.

**BMW EFFICIENT DYNAMICS.**  
LESS EMISSIONS. MORE DRIVING PLEASURE.

# THE NEW BMW X4.



## DIGITAL DISCOVERY: THE BMW BROCHURES APP.

More information, more driving pleasure: The BMW brochures app offers you a brand new digital and interactive BMW experience. Download the BMW brochures app for your smartphone or tablet now and explore new perspectives of your BMW.



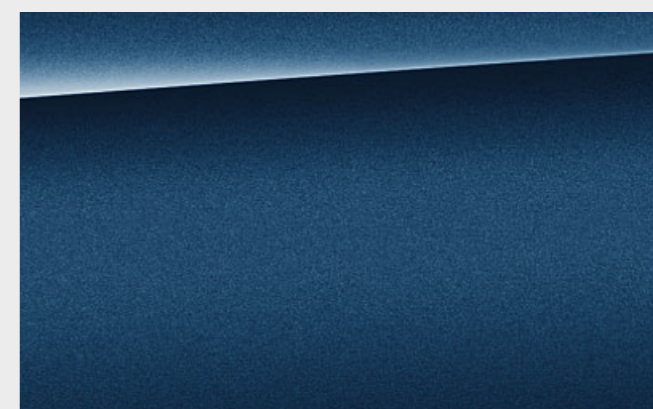
**M** PERFORMANCE



**18** BMW EfficientDynamics



**20** Equipment highlights



**22** Colour worlds



**26** Wheels and tyres/Genuine BMW Accessories



**DYNAMIC x  
DESIGN.**

**FULL FORCE  
AHEAD.**





A NEW MASTER  
OF THE ROAD.





MADE WITH ATTITUDE.

CONNECTING YOUR WORLDS.





STAND OUT WITH  
STYLISH DETAILS.



BRING IT ON.  
THE NEW BMW X4.

**SELF-ASSURED ATHLETIC EXTERIOR DESIGN** SPORTY SILHOUETTE AND AERODYNAMIC KIDNEY GRILLE || FULL-LED FRONT HEADLIGHTS AND REAR LIGHTS || 21" LIGHT ALLOY WHEELS.<sup>1</sup> **BRILLIANT PERFORMANCE** 50:50 WEIGHT DISTRIBUTION FOR IDEAL AGILITY || BMW xDRIVE WITH ACTIVE M SPORT DIFFERENTIAL<sup>2</sup> || M PERFORMANCE FOR MORE ATHLETICISM. **INNOVATIVE ASSISTANCE SYSTEMS** DRIVING ASSISTANT PLUS<sup>1</sup> || STEERING AND LANE CONTROL ASSISTANT<sup>1,3</sup> || LANE CHANGE ASSISTANT AND CROSSROADS WARNING<sup>1,3</sup> || PARKING ASSISTANT PLUS<sup>1</sup>. **EASY CONNECTIVITY** 10.25" CONTROL DISPLAY WITH TOUCH CONTROL<sup>1,4</sup> || GESTURE CONTROL<sup>1</sup> || HEAD-UP DISPLAY<sup>1</sup> || BMW CONNECTED+<sup>1,5</sup> AND CONCIERGE SERVICE.<sup>1,5</sup> **UNMISTAKABLY AESTHETIC INTERIOR DESIGN** LARGE PANORAMIC GLASS SUNROOF<sup>1</sup> || AMBIENT LIGHTING WITH WELCOME LIGHT CARPET || UNIQUE DESIGN OPTIONS BY BMW INDIVIDUAL<sup>1</sup>. **EXPERIENCE ITS ATHLETICISM, DISCOVER ITS AESTHETICS. THE NEW BMW X4.**

<sup>1</sup> Available as optional equipment.

<sup>2</sup> Standard for M40i and M40d.

<sup>3</sup> Part of Driving Assistant Plus.

<sup>4</sup> Only with BMW Professional Multimedia Navigation system.

<sup>5</sup> Requires BMW ConnectedDrive Services.

# DYNAMICS AND EFFICIENCY.

► **BMW EFFICIENT DYNAMICS.**  
LESS EMISSIONS. MORE DRIVING PLEASURE. ◀

## MORE POWER FROM LESS FUEL.

More power from three to 12 cylinders. Consume less, experience more – the **BMW TwinPower Turbo engines** offer the greatest possible dynamic performance with the highest efficiency thanks to the latest injection systems, variable output control and sophisticated turbocharger technology. Whether diesel or petrol, and no matter how many cylinders, the engines from the BMW EfficientDynamics engine family allow markedly more agile power delivery and outstanding responsiveness even at low rpm, while being fuel-efficient and low in emissions.

## MORE DRIVING PLEASURE, LESS EMISSIONS.

Approximately 33% less CO<sub>2</sub> emissions since 2000: **BMW EfficientDynamics** is a technology package that includes not only the drive, but rather the whole vehicle concept and intelligent energy management. Provided as standard in every BMW, a variety of innovative technologies contribute to continuously improving efficiency. Via engine efficiency measures, electrification, lightweight construction methods and optimised aerodynamics, BMW has managed to reduce the CO<sub>2</sub> emissions of its fleet by 33%.

## MORE SPEED, LESS WEIGHT.

Lower weight with intelligent lightweight construction. Special consideration for every last detail – intelligent lightweight construction means that the optimal material is found and implemented for each part of the vehicle. With extremely light high-tech materials such as aluminium and carbon fibre, **BMW EfficientLightweight** is pursuing the goal of minimising vehicle weight. That leads to even more dynamic performance, increased stability and heightened vehicle safety and comfort.



### AERODYNAMICS

With targeted measures focusing on aerodynamics, BMW has optimised the drag coefficient and efficiency as well as interior acoustics. Fuel consumption has also been reduced. The Active air stream kidney grille and the Air Curtain on the front wheels are targeted detailed measures to further reduce air resistance.

### ACTIVE AIR STREAM KIDNEY GRILLE

The Active air stream kidney grille represents the cutting edge of aerodynamic performance. When a cooling airflow is not needed, it electronically closes the radiator grille with its air vents and thereby reduces the amount of air flowing into the engine bay. This optimises both the aerodynamics and consumption rates.

### DRIVING EXPERIENCE CONTROL INCL. ADAPTIVE MODE

The Driving Experience Control offers the driver the choice between the standard COMFORT mode, ECO PRO Mode, geared towards efficiency, and SPORT mode, which enables even more dynamic driving. The new interactive function ADAPTIVE Mode<sup>1</sup> continuously adjusts the Dynamic Damper Control, the steering and the Steptronic transmission to suit the current driving situation.

## IN THE NEW BMW X4.

<sup>1</sup> Only available in conjunction with a navigation system.

# DRIVETRAIN AND SUSPENSION.

Innovation and Technology 18 | 19



## ENGINE HIGHLIGHTS OF THE NEW BMW X4.

### xDrive20d

BMW TwinPower Turbo four-cylinder diesel engine with 190hp (140kW) and 400Nm torque  
Acceleration 0–62mph: 8 seconds  
Top speed: 132mph  
Combined fuel consumption: 50.4–52.3mpg (5.4–5.6l/100km)  
Combined CO<sub>2</sub> emissions: 142–146g/km

### xDrive30d

BMW TwinPower Turbo six-cylinder diesel engine with 265hp (195kW) and 620Nm torque  
Acceleration 0–62mph: 5.8 seconds  
Top speed: 149mph  
Combined fuel consumption: 47.1–48.7mpg (5.8–6.0l/100km)  
Combined CO<sub>2</sub> emissions: 153–158g/km

### M40d

BMW TwinPower Turbo six-cylinder diesel engine with 326hp (240kW) and 680Nm torque  
Acceleration 0–62mph: 4.9 seconds  
Top speed: 155mph  
Combined fuel consumption: 42.8–44.1mpg (6.4–6.6l/100km)  
Combined CO<sub>2</sub> emissions: 170–173g/km

### M40i

BMW TwinPower Turbo six-cylinder petrol engine with 354hp (260kW) and 500Nm torque  
Acceleration 0–62mph: 4.9 seconds  
Top speed: 155mph  
Combined fuel consumption: 31.0–31.4mpg (9.0–9.1l/100km)  
Combined CO<sub>2</sub> emissions: 205–206g/km

## WE KEEP OUR PROMISE: AS STANDARD, ALL BMW TWIN POWER TURBO ENGINES CONFORM TO THE EU6 STANDARD THANKS TO BMW EFFICIENT DYNAMICS.

Additional gearshift paddles on the steering wheel allow the **eight-speed automatic transmission**<sup>1</sup> to be controlled manually as well for a sport experience. This allows the driver to quickly override the gear selection in automatic mode, or to shift completely manually in M mode, without having to take his or her hands off the wheel.

The intelligent **BMW xDrive all-wheel** drive system smoothly and variably distributes drive power to the front and rear wheels for maximum traction, driving dynamics and safety in every driving situation. For even better agility, the electronically controlled power distribution for instance counterbalances oversteer or understeer on bends.

The **Adaptive M suspension**<sup>2</sup> can be electronically adjusted at any time to suit the road and driving conditions. The driver can also adjust the suspension characteristics via the Driving Experience Control to enable their preferred driving style at the time – from comfortable to extremely athletic with markedly agile handling.

The **adaptive suspension**<sup>3,4</sup> makes it possible to adjust the damper characteristics to suit any given driving situation, increasing comfort and driving dynamics. In addition to the standard COMFORT setting, for high driving comfort, there are two other programs available, SPORT and SPORT+, for an even sportier driving style.

**Performance Control** intervenes via engine control and through controlled braking of the drive wheels towards the inside of the bend. This distributes more drive power to the outer wheels. Directing the vehicle's angular momentum into the curve to boost agility and directional stability.

**Dynamic Stability Control (DSC)** permanently assesses the vehicle's movements and stabilises it using engine and braking regulation when unstable driving conditions are detected. Additional features of DSC are, for example, brake drying, braking readiness or the Hill-Start assistant, which holds the vehicle briefly in place when starting on inclines to prevent it from rolling backwards.

<sup>1</sup> Standard for xDrive20d.

<sup>2</sup> Only available for M40i and M40d.

<sup>3</sup> Only available for xDrive20d and xDrive30d.

<sup>4</sup> Not available with 704, M Sport suspension.

Figures are obtained through a standard test cycle. They are intended for comparisons between vehicles and may not be representative of what a user achieves under usual driving conditions.

# EQUIPMENT HIGHLIGHTS.

Discover more with the BMW brochures app. Now available for your smartphone and tablet.

■ Standard equipment. □ Optional equipment.



□ When open, the Panoramic sun roof provides a great deal of fresh air. Closed, it creates a bright, light-flooded atmosphere in the interior. It opens and closes completely automatically at the push of a button, or remotely, and is equipped with slide and lift functions, floating headlining and wind deflector.



□ The Sport seats for the driver and front passenger provide optimum lateral support by allowing electric adjustment of the backrest width.



■ The rear lights with their characteristic L-shape and lighting elements in full LED technology identify the vehicle as a BMW even in the dark.



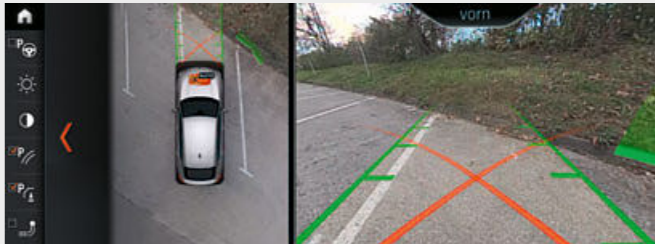
□ The Instrument panel and door panels in Sensatec lend the interior of the vehicle a highly exclusive atmosphere.



□ The digital cockpit with Black-panel technology and 12.3" screen<sup>1</sup> provides a highly impressive visualisation of the driving experience. The three different driving modes, ECO PRO, Comfort and Sport, each have their own colour scheme and graphic style in the instrument cluster.



□ BMW Connected+<sup>3</sup> delivers a more extensive level of integration of the BMW App in your BMW.  
□ On arrival, users can use the Door to door guidance function<sup>3</sup> to be guided from their parked car to their final destination by foot.



□ Parking Assistant Plus<sup>1</sup> makes parking and manoeuvring the vehicle easier. As well as the features of Parking Assistant, it includes Surround View and Remote 3D View.



□ The full-colour BMW Head-Up Display<sup>2</sup> projects all information relevant to the journey directly into the driver's field of vision, thereby allowing them to fully concentrate on driving. Information such as the current speed, navigation directions, Speed Limit Info including no-overtaking indicator, along with telephone and entertainment lists are displayed.



□ The sun protection glass for the rear window and rear side windows reduces unwanted warming of the interior.  
□ The acoustic glass on the front side windows and front windscreen reduces the level of noise for everyone inside the vehicle.



□ Enhanced Bluetooth with wireless charging<sup>4</sup> offers comprehensive telephony with Bluetooth connectivity and the technical capacity for a wifi hotspot.  
□ Wifi hotspot<sup>5</sup> preparation uses the LTE standard which allows for a paid internet connection.



□ The BMW Individual Extended Merino leather in Ivory White impresses with its outstanding quality, as well as with masterfully crafted details.



□ The BMW display key shows various information about the vehicle's status and allows selected functions to be controlled with an integrated touch display.

<sup>1</sup> Only available with BMW Professional Multimedia Navigation system.

<sup>2</sup> The contents shown by the Head-up Display depend on equipment. The visuals in the Head-up Display are not fully visible when wearing polarised sunglasses.

<sup>3</sup> Only available in conjunction with ConnectedDrive Services.  
<sup>4</sup> For Smartphones without an inductive charging function, special charging cases are available to purchase via BMW Parts and Accessories for selected devices. Extended functionality may depend on the features of the Bluetooth / USB device in use. For confirmation, please check the Bluetooth Compatibility Checker on [www.bmw.co.uk](http://www.bmw.co.uk).

<sup>5</sup> The WiFi hotspot fulfils all in-vehicle requirements for use of the internet with the maximum LTE standard. Usage is subject to cost.

# EXTERIOR COLOURS.

Discover more with the BMW brochures app. Now available for your smartphone and tablet.

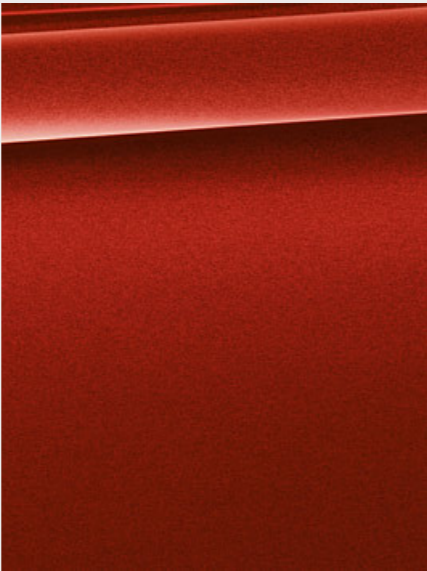
■ Standard equipment. □ Optional equipment.



■ **Non-metallic** 668 Jet Black<sup>1</sup>



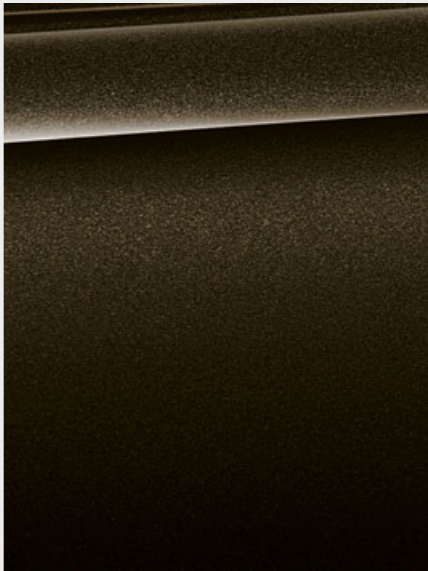
■ **Non-metallic** 300 Alpine White



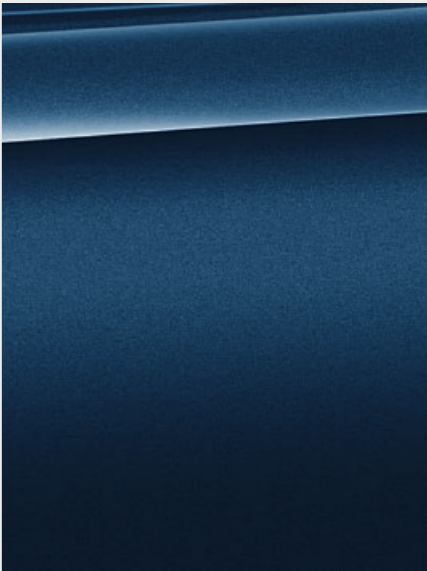
□ **Metallic** C06 Flamenco Red Xirallic<sup>2</sup>



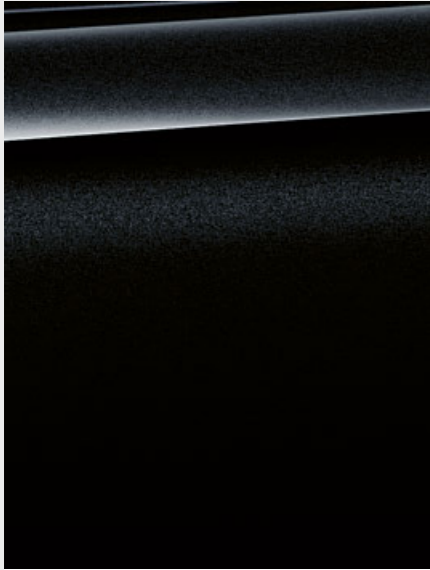
□ **Metallic** A96 Mineral White<sup>1</sup>



□ **Metallic** C07 Sparkling Storm<sup>1</sup>



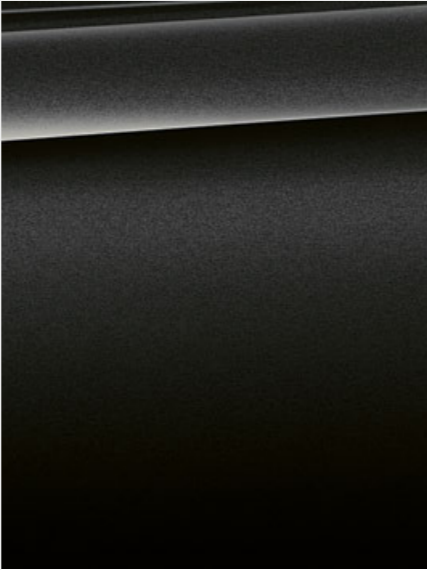
□ **Metallic** C1M Phytonic Blue



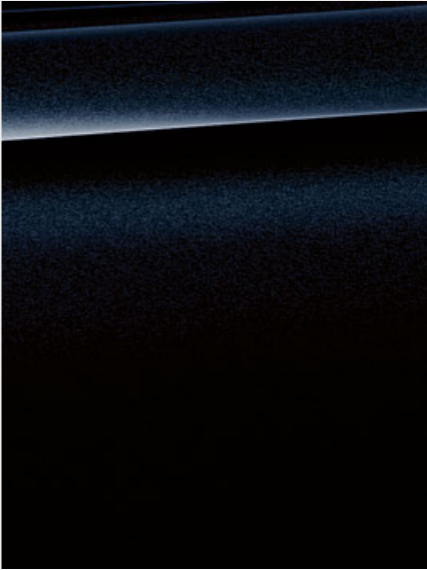
□ **Metallic** 475 Black Sapphire



□ **Metallic** A83 Glacier Silver

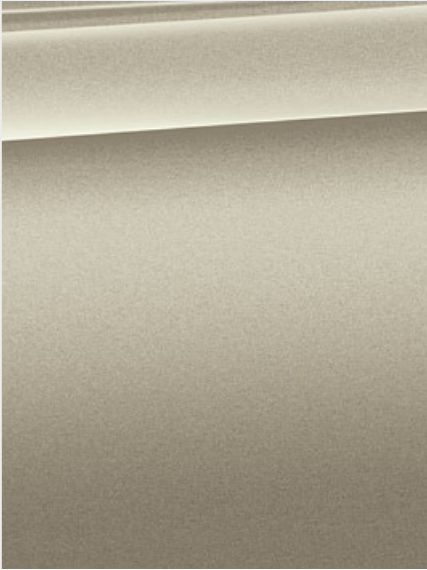


□ **Metallic** A90 Sophisto Grey



□ **Metallic** 416 Carbon Black<sup>2</sup>

## BMW INDIVIDUAL.



□ **BMW Individual** C1N Sunstone metallic<sup>3</sup>

**[Colour samples]** These colour samples are intended as an initial guide to the colours and materials available for your BMW. However, experience has shown that printed versions of paint, upholstery and interior trim colours cannot in all cases faithfully reproduce the

appearance of the original colour. Please discuss your preferred colour choices with your BMW Retailer. There you can also see original samples and be assisted with any requests.

**[ BMW Configurator ]** Use the Configurator to create your very own, personalised BMW. All current colours and equipment are available for you to choose from. For further details, see [www.bmw.co.uk/ncc](http://www.bmw.co.uk/ncc)

<sup>1</sup> Not available with M Sport, M Sport X, M40i or M40d models.

<sup>2</sup> Only with M Sport, M Sport X, M40i or M40d models.

<sup>3</sup> Sport models: only with 778, Door sill finishers with BMW Individual designation.

# INTERIOR COLOURS.

Discover more with the BMW brochures app. Now available for your smartphone and tablet.

■ Standard equipment. □ Optional equipment.

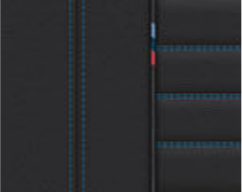
## LEATHER

Available with



- Sport
- M Sport
- M Sport X
- M40i/d

**Vernasca leather**  
MAFO Canberra  
Beige with contrast stitching/interior colour Black<sup>1</sup>



- M Sport
- M Sport X
- M40i/d

**Vernasca leather**  
MANL Black with Blue contrast stitching/interior colour Black<sup>2</sup>



- Sport
- M Sport
- M Sport X
- M40i/d

**Vernasca leather**  
MAH7 Black with contrast stitching/interior colour Black<sup>1</sup>



- M Sport
- M Sport X
- M40i/d

**Vernasca leather**  
MAOQ Oyster with contrast stitching and extended content/interior colour Black



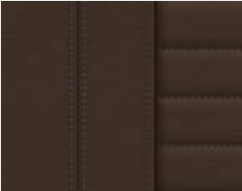
- M Sport
- M Sport X
- M40i/d

**Vernasca leather**  
MAH8 Black with Red contrast stitching/interior colour Black<sup>2</sup>



- M Sport
- M Sport X
- M40i/d

**Vernasca leather**  
MAPQ Cognac with contrast stitching/interior colour Black<sup>4</sup>



- Sport
- M Sport
- M Sport X
- M40i/d

**Vernasca leather**  
MAMU Mocha with contrast stitching/interior colour Black<sup>1, 3</sup>

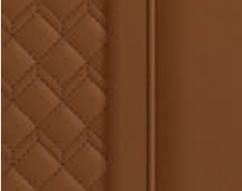


- M Sport
- M Sport X
- M40i/d

**Vernasca leather**  
MAG6 Tacora Red with contrast stitching/interior colour Black<sup>3</sup>

## BMW INDIVIDUAL LEATHER

Available with



- Sport
- M Sport
- M Sport X
- M40i/d

**BMW Individual Extended Merino leather**  
VATQ Tartufo, interior colour Black<sup>3, 5, 7</sup>



- Sport
- M Sport
- M Sport X
- M40i/d

**BMW Individual Extended Merino leather**  
VAEW Ivory White, interior colour Black<sup>3, 5, 7</sup>



- Sport
- M Sport
- M Sport X
- M40i/d

**BMW Individual Extended Merino leather**  
VAHZ Fiona Red, interior colour Black<sup>3, 5, 7</sup>

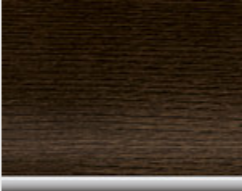
## INTERIOR TRIMS

Available with



- Sport

4LU Black, High-gloss with Pearl Chrome finisher



- Sport
- M Sport
- M Sport X
- M40i/d

4K1 Dark Oak Wood, High-gloss with Pearl Chrome finisher



- M Sport
- M40i/d

4K7 Aluminium Rhombicle with Pearl Chrome finisher



- Sport
- M Sport
- M Sport X
- M40i/d

4K9 Aluminium fine cutting with Pearl Chrome finisher



- Sport
- M Sport
- M Sport X
- M40i/d

4LH Fineline Cove fine-wood with Pearl Chrome finisher



- Sport
- M Sport
- M Sport X
- M40i/d

4LQ Poplar grain Grey fine-wood with Pearl Chrome finisher



- M Sport X

4KN Aluminium Rhombicle dark with Pearl Chrome finisher

## BMW INDIVIDUAL INTERIOR TRIM

Available with



- Sport
- M Sport
- M Sport X
- M40i/d

4ML Piano Black

## HEADLINING

Available with



- Sport
- M Sport
- M Sport X
- M40i/d

775 Anthracite

Please note that even normal long or short-term use can lead to permanent upholstery damage. This can be caused in particular by non-colourfast clothing.

<sup>1</sup> Sport models: not with 4FH, Ventilated seats, front.  
<sup>2</sup> Only with 4AW, Instrument panel in Sensatec.  
<sup>3</sup> Sport models: only with 481, Sport seats, front.  
<sup>4</sup> Not with 4FH, Ventilated seats, front.

<sup>5</sup> Not with Flamenco Red metallic paint.  
<sup>6</sup> Sport models: only with 778, Door sill finishers with BMW Individual designation.  
<sup>7</sup> Only with 775, BMW Individual headliner Anthracite.

# WHEELS AND TYRES.

Discover more with the BMW brochures app. Now available for your smartphone and tablet.



□ 21" M light alloy Double-spoke style 718 M wheels, Matt Cerium Grey, front 8.5 J x 21 with 245/40 R21, rear 9.5 J x 21 with 275/35 R21 run-flat tyres.<sup>1</sup>



□ 21" BMW Individual light alloy wheels V-spoke style 726 I in Bicolor Orbit Grey, bright turned, with mixed tyres and run-flat properties, front 8.5J x 21 with 245/40 R21 tyres, rear 9.5J x 21 with 275/35 R21 tyres.<sup>2,3</sup>



■ 20" M light alloy wheels Double-spoke style 699 M in Bicolor Orbit Grey, bright turned, with mixed tyres, front 8J x 20 with 245/45 R20 tyres, rear 9.5J x 20 with 275/40 R20 tyres.<sup>4,5</sup>



□ 19" light alloy wheels V-spoke style 691 in Reflex Silver, wheel size 7.5J x 19 with 245/50 R19 tyres.<sup>6</sup>



□ 19" light alloy wheels V-spoke style 692 in Bicolor Ferric Grey, bright turned, wheel size 7.5J x 19 with 245/50 R19 tyres.<sup>6</sup>



■ 19" M light alloy wheels Double-spoke style 698 M in Bicolour Ferric Grey, bright turned, wheel size 7.5J x 19 with 245/50 R19 tyres.<sup>2,3</sup>



□ 20" M light alloy wheels Double-spoke style 787 M in Bicolor Orbit Grey, bright turned, with mixed tyres, front 8J x 20 with 245/45 R20 tyres, rear 9.5J x 20 with 275/40 R20 tyres.<sup>3,4</sup>

<sup>1</sup> Only available for M40i and M40d.  
<sup>2</sup> Only available with M Sport models.  
<sup>3</sup> Only available with M Sport X models.

<sup>4</sup> Only available with M Sport Plus package.  
<sup>5</sup> Standard with M40i and M40d models.  
<sup>6</sup> Only available with Sport models.

# GENUINE BMW ACCESSORIES.

Equipment 26 | 27

■ Standard equipment. □ Optional equipment. ○ Accessories



○ The **modern roof box** in black with titanium silver side panels has a capacity of 420 litres and is compatible with all BMW roof rack systems. Due to the fact that it can be opened from both sides and has triple central locking on each side it is convenient to load and lock for theft protection. Roof boxes in other sizes are also available.



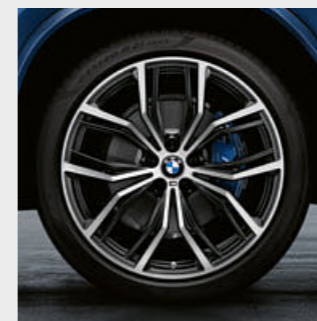
○ The **BMW Advanced Car Eye** is a highly sensitive full-HD camera that captures events around the car, even at night. If the vehicle is shaken or in the event of unusual movement in or around the vehicle, the camera automatically records the situation in order to document possible accidents or (attempted) break-ins. Due to launch in July.



○ The perfectly fitted, durable **all-weather floor mats** with raised border and elegant design protect the front and rear footwell from moisture and dirt. They are black and feature a black X4 inlay.



○ The wireless charging case allows you to charge your iPhone wirelessly in your car (requires option 6NW).



○ **21" BMW M Performance light alloy wheels** Y-spoke style 701 M, in Bicolor black matt, gloss-lathed. Summer complete wheel set with run-flat mixed tyres.



○ Meticulously hand-made from carbon fibre, the striking exterior **mirror covers** underline the vehicle's high-tech pedigree. Their dynamic design ensures an eye-catching premium look and adds an individual athletic touch.

Discover the wide range of innovative solutions available for the exterior and interior, communication & information, and for transportation & the luggage compartment. Your BMW Retailer is on hand to advise you on the whole range of Genuine BMW Accessories

and can also provide you with an accessories catalogue. For further information, please visit [www.bmw.co.uk/accessories](http://www.bmw.co.uk/accessories)



**BMW X4 M40i.**

M Performance TwinPower Turbo six-cylinder in-line petrol engine, 354hp (260kW), 21" M light alloy Double-spoke style 718 M Cerium Grey Matt wheels with mixed tyres, Flamenco Red metallic paint, Sport seats for driver and front passenger in Vernasca Black leather with Red contrast stitching, Aluminium Rhombicle interior trim with Pearl Chrome finisher, instrument panel in Sensatec.

The models illustrated in this catalogue show the equipment and configuration options (standard and optional) for vehicles produced by BMW AG for the German market. Alterations in standard and optional equipment and the configurations available for the different models, as described in this brochure, may differ at the time of printing, or according to the specific requirements of other markets. Your local BMW Retailer is available to provide further details. Subject to alteration in design and equipment. Part number 95 38 3 005 041. July 2018.

© BMW AG, Munich, Germany. Not to be reproduced wholly or in part without prior written permission of BMW AG, Munich.

411 004 118 211 2018 BM. Printed in Germany 2018.